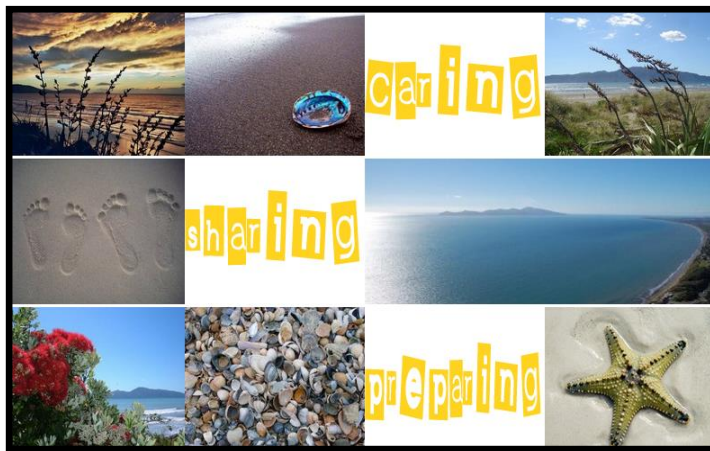




# Welcome



*Transition Information  
Booklet  
Nau mai!*



Dear Parents/Caregivers,



Starting school is an exciting and important step in your child's life - and your own! At Paraparaumu Beach School we look forward to working with you and your child to make this important stage rewarding and positive.

Our staff are committed to meeting the needs of all children, to the best of our ability, whilst valuing their uniqueness.

At Paraparaumu Beach School we have an open door policy and value the communication between home and school, as partnerships between staff and parents are an integral part of your child's learning. Please do not hesitate to contact us with questions regarding your child's transition to school (see details on the back page of this booklet).

This booklet briefly outlines what you can do with your child to help prepare them for starting school. When you begin school visits another booklet will be given to you outlining the Curriculum overview.

Once again, welcome to Paraparaumu Beach School. We look forward to a positive partnership between your family and our school.

Tātahi Syndicate (Year 0-2 Teachers)

### **Class Level - Junior Placements**

A child whose start date (first day at school) is between January and April will be Year 1. A child whose start date (first day of school) is between May and December will be classified as New Entrants.





## Helpful Information – Before your child starts school



### *Transition to School Before 5*

As part of the enrolment process we believe that a successful transition to school starts before your child turns 5 and relies heavily on parent participation.

(Please be aware that there is more detailed information about the day to day running of Paraparaumu Beach School in the school enrolment pack. This can be collected from our school office and also contains the contact details of the relevant staff who can assist you with your child's transition to Paraparaumu Beach School).

We run three to four school visits before starting school as indicated on the letter which will be sent to you.

Most children are able to transition smoothly with these school visits.

These school visits provide your child with a little taster of school life within the actual school environment.

### *Prior to starting school, it would be helpful if your child:*

- toilet themselves, changing clothes, washing hands.
- can pack and unpack his/her bags.
- can handle morning tea and lunch items independently.
- can manage own clothes and shoes (velcro is great!).
- can follow 2-3 simple instructions in sequence.
- is used to playing games and taking turns.
- is able to sit and listen to and tell stories.
- can vocalise their needs e.g “I have a sore tummy”.





- can hold a pencil correctly.
- can recognise/write his/her own name in lower case letters.
- can manage scissors and crayons.
- has some alphabet knowledge (singing the alphabet) and experience with books
- knows basic rote counting.



### ***Things you can do to help your child before they start school:***

- talk to your child about starting school where he/she will meet new friends, play games, sing and make things.
- help him / her to learn to put on their own shoes and do them up.
- buy clothes and shoes that are easy to manage.
- label all possessions (e.g. clothes, books, lunchbox).
- give them duties to perform around the home which will require simple directions - this will help with confidence.
- teach your child to put things away after using them.
- read to them regularly in order to develop their attention span and a love of books.
- encourage them when work is brought home.
- select stories to share.
- use lower case letters when writing for or with your child.
- discuss any concerns with the classroom teacher.

## Notes / Questions



For more information please visit our Ultranet page,

<http://paraparaumubeach.ultranet.school.nz/Home/>

Or phone (04) 2985775 - Sandy Saunders  
alternatively email - sandys@pbs.school.nz